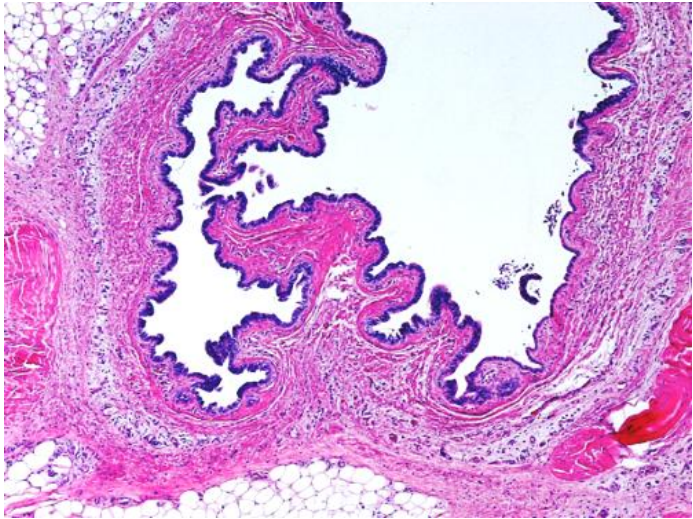
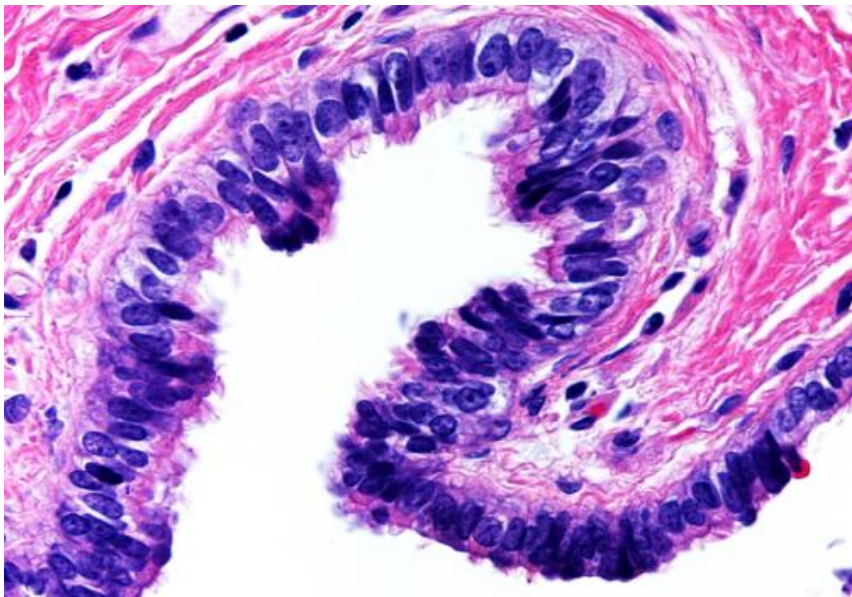
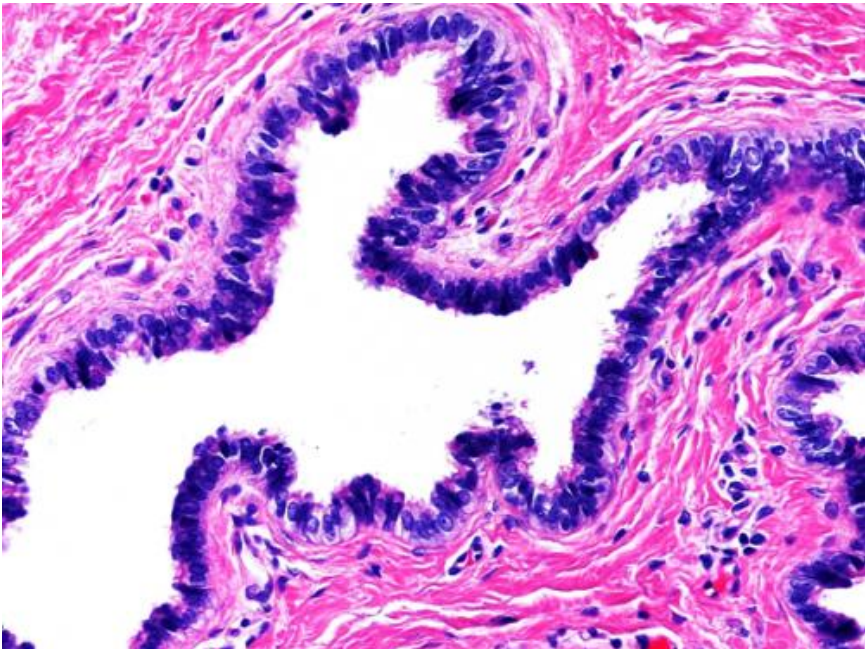


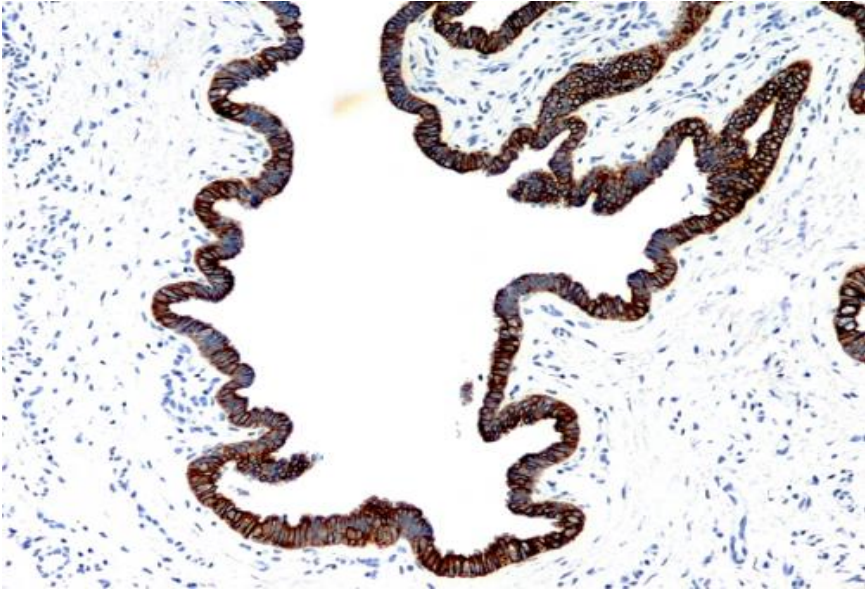
**F 48, right heel cyst**



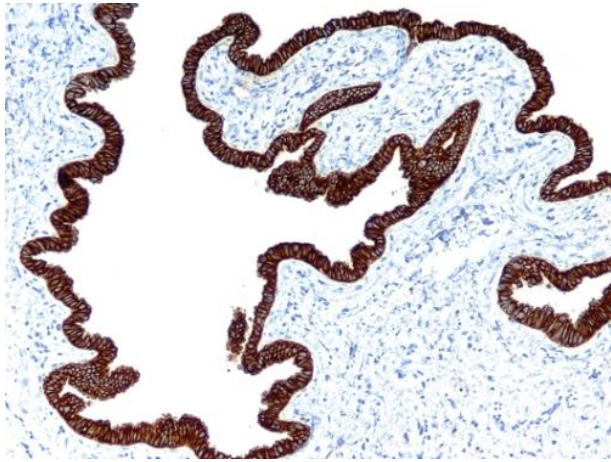
Cyst in the soft tissue



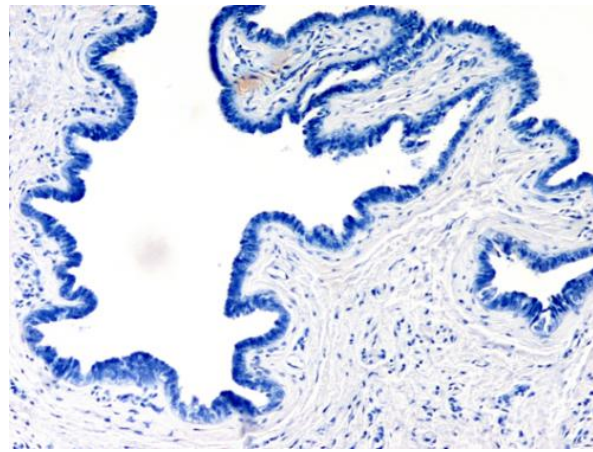
Ciliated columnar epithelium



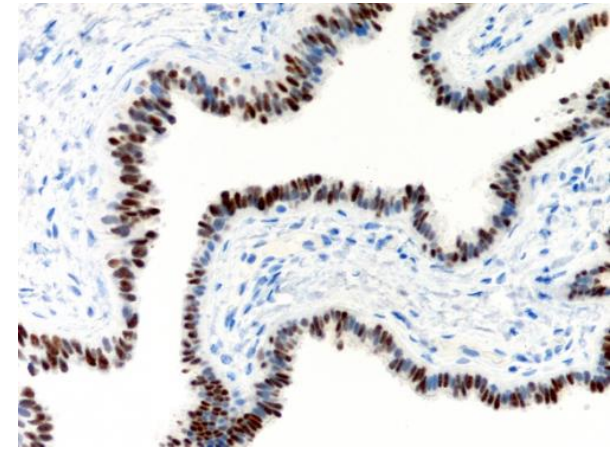
Pan-CK (CK AE 1/3): Positive cytoplasmic stain



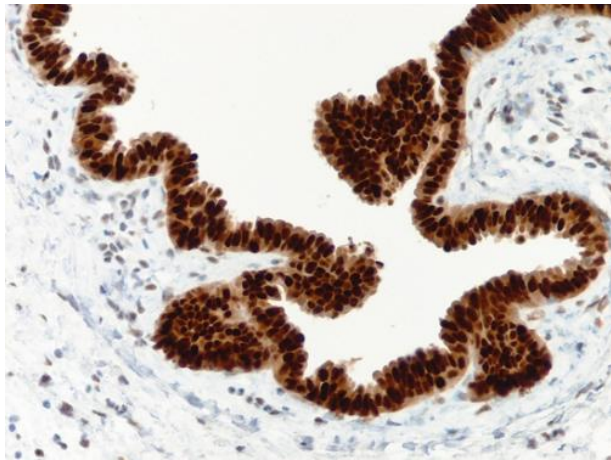
Cam 5.2 (CK8/18): Positive cytoplasmic stain



CEA: Negative



ER: Positive nuclear stain



PR: Positive nuclear stain

### **Diagnosis: Cutaneous ciliated cyst (Cutaneous Mullerian cyst)**

- Solitary cystic lesion of lower limb of woman (10-50 yrs), thought to be arising from heterotopic Mullerian epithelium.
- Cyst is unilocular or multilocular with intralocular papillary projections, lined by ciliated cuboidal or columnar epithelium similar to that of fallopian tube.
- Lining cells show immunoprofile similar to that of fallopian tube epithelium (Positive cytoplasmic staining with CK, Negative CEA, and Positive nuclear staining with ER and PR).

-Rare ciliated cutaneous cysts seen in man are thought to be arising from eccrine or apocrine gland with ciliary metaplasia.

-Differential diagnosis: Ciliated epithelial cells are also seen in brochogenic, thyroglossal duct, branchial, thymic and mature cystic teratoma.

**Ref: Stevens T, Sarma DP (2011). Unknown: Biopsy of a 5-mm cystic lesion on the right heel of a 48-year-old woman. Dermatology Online J 17(6):6, PubMed.**